



**REGIONAL SPECIALISED METEOROLOGICAL CENTRE-TROPICAL CYCLONES, NEW DELHI
TROPICAL WEATHER OUTLOOK**

DEMS-RSMC TROPICAL CYCLONES NEW DELHI DATED 20.12.2024

TROPICAL WEATHER OUTLOOK FOR THE NORTH INDIAN OCEAN (THE BAY OF BENGAL AND THE ARABIAN SEA) VALID FOR THE NEXT 168 HOURS ISSUED AT 0600 UTC OF 20.12.2024 BASED ON 0300 UTC OF 20.12.2024.

BAY OF BENGAL:

Yesterday's well marked low pressure area over southwest and adjoining westcentral Bay of Bengal has moved nearly northwards and now lay over westcentral and adjoining southwest Bay of Bengal at 0300 UTC of today, the 20th December 2024. The associated upper cyclonic circulation extends up to 5.8 km above mean sea level. The system is likely to move nearly northwards and concentrate into a depression over westcentral Bay of Bengal during next 12 hours. Thereafter, it is likely to move north-northeastwards maintaining the intensity of depression for subsequent 24 hours.

Scattered to broken low and medium clouds with embedded intense to very intense convection lay over westcentral, adjoining eastcentral & South Bay of Bengal (minimum CTT minus 70-80 degree celcius). Scattered low and medium clouds with embedded moderate to intense convection lay over north Bay of Bengal and south Andaman sea.

***PROBABILITY OF CYCLOGENESIS (FORMATION OF DEPRESSION) DURING NEXT 168 HRS:**

24 HOURS	24-48 HOURS	48-72 HOURS	72-96 HOURS	96-120 HOURS	120-144 HOURS	144-168 HOURS
NIL	LOW	LOW	--	--	NIL	NIL

***NOTE: EVERY 24HR FORECAST IS VALID UPTO 0300 UTC (0830 IST) OF NEXT DAY**

ARABIAN SEA:

Scattered low and medium clouds with embedded intense to very intense convection lay over southeast Arabian sea adjoining Equatorial Indian ocean (minimum CTT minus 70-75 degree celcius). Scattered low and medium clouds with embedded moderate to intense convection lay over Maldives & Comorin area and isolated weak to moderate convection lay over rest Arabian sea.

***PROBABILITY OF CYCLOGENESIS (FORMATION OF DEPRESSION) DURING NEXT 168 HRS:**

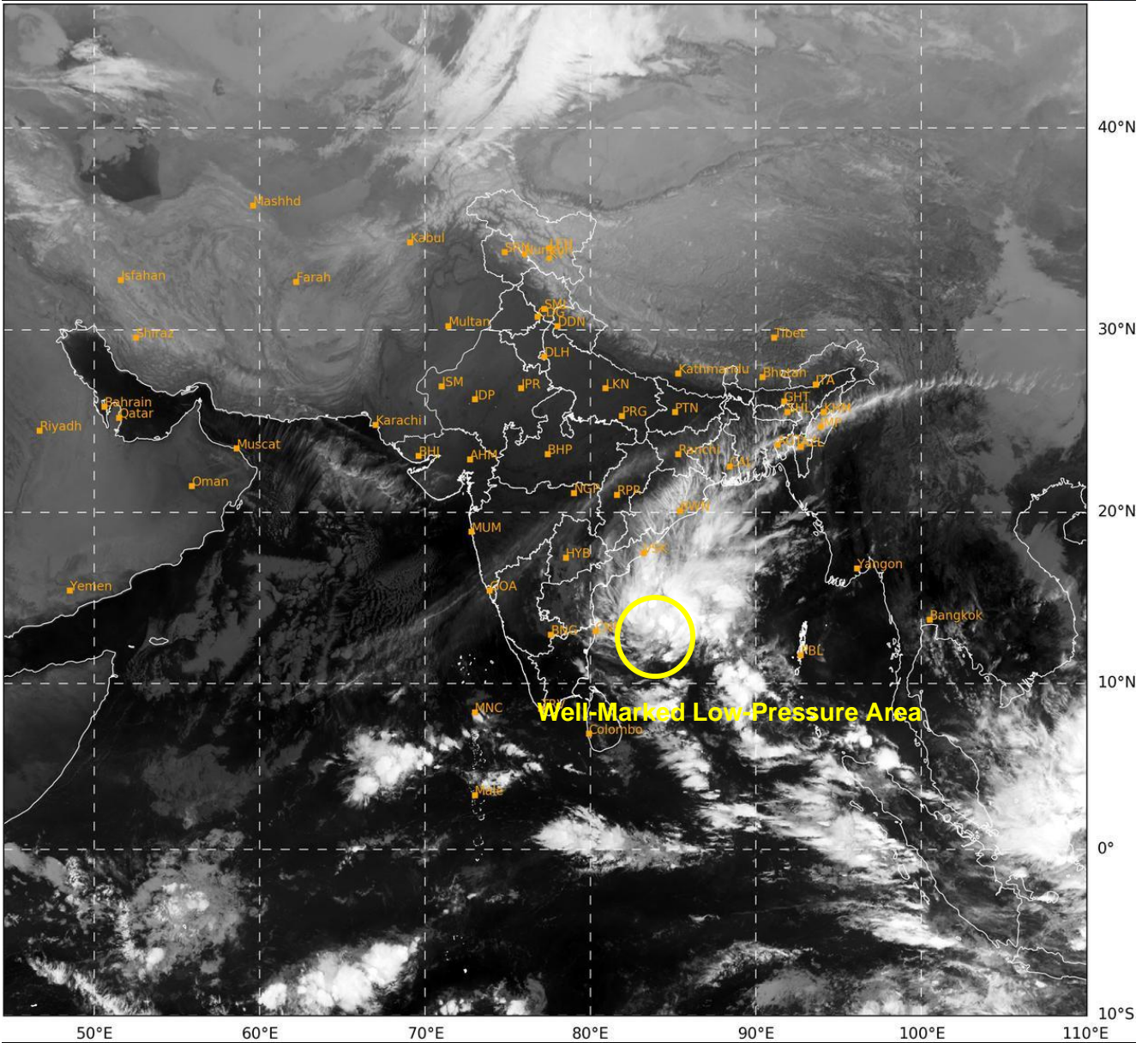
24 HOURS	24-48 HOURS	48-72 HOURS	72-96 HOURS	96-120 HOURS	120-144 HOURS	144-168 HOURS
NIL	NIL	NIL	NIL	NIL	NIL	NIL

***NOTE: EVERY 24HR FORECAST IS VALID UPTO 0300 UTC (0830 IST) OF NEXT DAY**

REMARKS: NIL

SAT : INSAT-3DR IMG
IMG_TIR1 10.8 um
LIC Mercator

20-12-2024/(0315 to 0342) GMT
20-12-2024/(0845 to 0912) IST



455

937

IMD, DELHI

Cloud distribution: (a) Isolated: <25%, Scattered:25-50%, Broken: 51-75%, Solid:>75%, Convection Intensity: (a) Weak: Cloud Top Temperature (CTT) >-25°C, (b) Moderate: CTT: - 25°C to -40°C, (c) Intense: CTT: - 41°C to -70°C and (d) Very Intense: : Less than -70°C
PROBABILITY OF CYCLOGENESIS (FORMATION OF DEPRESSION):NIL: 0%, LOW: 1-33%, , MODERATE: 34-66% AND HIGH: 67-100%
This is a guidance Bulletin for WMO/ESCAP Panel Member countries. Visit respective National websites for Country specific Bulletins